



Rush Lake News



Winter 2016

Rush Lake Property
Owners Association

Phone: 734-878-0340
email: rushlakepoa@yahoo.com
Website: rushlakepoa.com

THIS YEAR'S LAKE PLANS

The Board has developed the initial weed treatment and harvesting plans for the upcoming summer.

At the November meeting they met with Lake Pro, their lake consultant, and reviewed all the herbicide and harvesting work that was completed this past summer. Although the new plans for the lake have not been finalized, future work on the lake will continue to include a combination of herbicide treatments in the canals and some portions of the main body of the lake. Also, like last year, some harvesting will be done in middle portions of the lake. It is important to note that the expenses for the herbicide treatments in the canals and parts of the main lake take up the majority of our budget, and the harvesting is done as a supplement to this work.

In late January the consultant will be sending over his proposal for 2016 work, and we hope to have a completed plan in place by the March Board meeting. We have requested that the harvesting be done one week earlier than last year.

ATTENDING BOARD MEETINGS

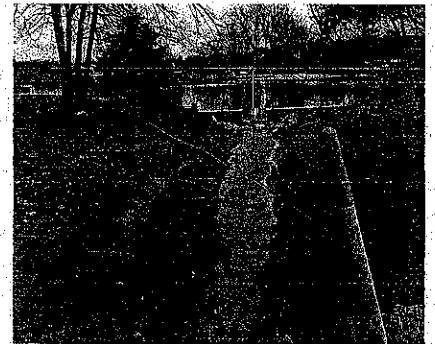
The Board has previously reminded members that all Board meetings are open to any member that wishes to attend. Meetings are held on the first Wednesday of each month throughout the year.

Meetings in June and December are only held "if needed". Although members are of course welcome at all Board meetings, it is particularly important that members attend the two semi-annual meetings held in May and October. At these meetings, the Board takes up issues of significant importance to our members, such as the annual budget, major lake and road maintenance decisions, Board elections, etc. It is helpful to the Association if as many members as possible make an effort to be at these meetings to give their input.

Although all meetings are held at the Hamburg Senior Center, occasionally a Semi-Annual meeting location has to be moved. If you plan to attend a regular meeting, please check the Association website or call the Association Clerk to verify the meeting's location.

NEW DAM IS WORKING WELL!

Winter is here, and as you can see from the picture below taken at Christmas, the new dam is overflowing nicely into a ditch that drains into a culvert that runs under Chambers Road.

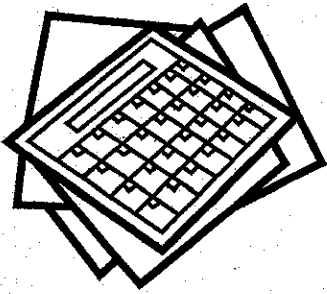


CHECK OUT OUR WEBSITE!

A reminder to be sure to visit our new website, rushlakepoa.com. It is updated regularly and contains all the information you need about our lake and our Association, along with photos, news, and happenings around the lake. Take a look and it will give you a big.....



Upcoming



Meeting Dates

Monthly Board Meeting
Wednesday,
February 3, 2016
6:30 p.m.

Monthly Board Meeting
Wednesday,
March 2, 2016
6:30 p.m.

Monthly Board Meeting
Wednesday,
April 6, 2016
6:30 p.m.

Semiannual meeting
Wednesday
May 4, 2016
7:00 p.m.

Monthly Board Meeting
Wednesday,
June 1, 2016
6:30 p.m.

Monthly Board Meeting
Wednesday,
July 6, 2016
6:30 pm (if needed).

All meetings are held at the
Hamburg Community Center
on Merrill Road.
Members are welcome to
attend any of the meetings

HOW ANNUAL DUES ARE HANDLED

Ever wonder
how exactly the
annual dues and
payments are
handled? Here's how:



According to the By Laws,
yearly dues are due and payable
on January 1st of each year.
However, members are given
until June 30th to actually pay
them without penalty. A 10%
late charge will be assessed on
any balances not paid by that
date. Payments must be
postmarked by June 30th to
avoid a penalty.

Members receive a paper bill
along with the Winter
Newsletter that they receive in
late January.

Payments can only be made
by mail or at an actual Board
meeting. Payments cannot be
made by credit card.

2014 - 2015 Officers

President Lois Pescia
Vice President Eric Schaufele
Treasurer Lex Kinter
Secretary Joe Grech

Board Members

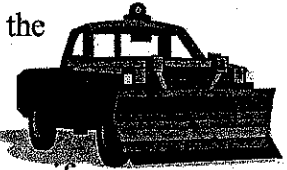
Fred Clough
Gerard Lasecki
Christina Letzring
Peggy Pietras
Pam Sevonty

Association Clerk

Teresa Kinter
734-878-0340

Please Don't Block The Road

Parking in the
road during
the winter
months can
create problems if



the snowplow needs to come
through. The area of the road
you are parked on will not be
plowed which will narrow the
road considerably and make it
difficult for others to pass. Be a
good neighbor and don't park in
the road during the winter
months.

Also remember to remove
trash cans and other items from
the roadway during the winter.
While the trash companies will
often dump your cans into the
roadway, be sure to remove
them as soon as possible so they
don't block traffic or the snow
plows.

NEWSLETTER DATES

Association newsletters are
published four times a year.
They come out in late January,
mid April, late June, and mid-
September. We try particularly
hard to remind members of
upcoming late charges for dues,
and the upcoming Semi-Annual
Meetings. The Board welcomes
any ideas or suggestions
members may have for our
newsletter. Just contact the
Association Clerk at 734-878-
0340 with your thoughts.

RUSH LAKE PROPERTY OWNERS ASSOCIATION
2015 Annual Report
January through December 2015

Account	Balance - 1/1/15	Income	Expense	Balance - 12/31/15
Lake Income		31,513.79		
Lake Expense				
Management (Lake Pro)			1,500.00	
Miscellaneous			80.22	
Water Testing			690.00	
Weed Control			28,185.00	
Lake Totals	\$ 15,243.95	\$ 31,513.79	\$ 30,455.22	\$ 16,302.52
Operations Income		\$ 48,766.50		
Operation Expense				
Accountant			845.00	
Insurance			3,914.00	
Newsletter, Website, Meetings			3,161.86	
Office Supplies, Postage			2,278.15	
Payroll Wage and Tax			16,056.45	
Utilities			2,939.06	
Filing Fee			251.35	
Operation Totals	\$ 36,410.14	\$ 48,766.50	\$ 29,445.87	\$ 55,730.77
Park Income		7,624.07		
Park Expense				
Lawn Maintenance			2,940.00	
Misc. Cleanup and Repair			2,091.20	
Refuse Removal			1,929.00	
Park Totals	\$ 11,172.29	\$ 7,624.07	\$ 6,960.20	\$ 11,836.16
Road Income		34,568.78		
Road Expense				
Asphalt Repair			1,000.00	
Dust Control			7,590.00	
Grading and Gravel			29,806.25	
Miscellaneous			179.52	
Snow Removal			3,185.00	
Tree Trimming				
Road Totals	\$ 12,709.38	\$ 34,568.78	\$ 41,760.77	\$ 5,517.39
Special Asssment: Dam	\$ 31,527.96	\$ 124.31	\$ 39,336.99	\$ (7,684.72)
Special Asssment: Lake	\$ 1,149.39			\$ 1,149.39
Totals	\$ 108,213.11	\$ 122,597.45	\$ 147,959.05	\$ 82,851.51

Is The Ice Safe?

A simple answer to this question would be "no, the ice is never really safe", but with care and caution, one can venture out on the ice without any mishaps.

Wait to walk out onto the ice until there is at least 4 inches of clear, solid ice. While thinner ice will usually hold one person, ice thickness can vary during the season so by using four inches as a guide, it will provide you with a margin of safety.

Test the ice ahead of you with an ice spud.

Children should always be supervised while on the ice.

Snowmobiles and ATV's need at least 5 inches of good, clear ice while cars and light trucks need at least 8 - 12 inches.

Check with a local bait shop or sport shop for information on known thin ice areas.

Take a pair of wooden handled screwdrivers or ice picks with you while on the ice. Screwdrivers with wooden handles will float instead of sinking should you drop them and they will aid you in pulling yourself up and onto the ice should you fall in.

Never go out alone, and if not alone, keep a distance apart while you walk. If one of you falls in, the other person can then call for help.

Are You Missing Out?

If you haven't already signed up for Association emails, you may be missing out on important current information about what's happening on the lake. You will be informed about items lost, or found, changes in Association meetings, recent criminal activity, or other things occurring in our area.

If you would like to be added to the list of our email recipients, please send an email to the Association at rushlakepoa@yahoo.com and ask to be added to our list.

The Association does not sell or share email addresses.

Please Slow Down!

The speed limit for most of the roads in the Rush Lake area is 25 mph, but very few people seem to observe that speed limit. A number of members have expressed concerns over the speeding that seems to be commonplace on our roads.

People seem to have forgotten that we have children walking on our roads and we all need to be extra cautious to avoid a tragedy. It has been recommended that if we do observe someone speeding to get a description of the vehicle and driver along with the license plate number and report it to the police. The police won't be able to ticket someone based on your report, but if enough people call, the police will be more likely to investigate the complaints.

So please, if you do see someone continually causing a dangerous situation in our neighborhood, don't hesitate to report them.

Don't Dump Leaves!

It was brought to the Board's attention this fall that some Association members have been dumping their leaves in the Association parks. The Board requests that the parks not be used for dumping. While this may seem like an easy solution to some, the end result is that we will all have to bear the cost of having the leaves removed.

Water Saving Tips

- Cut 1 or 2 minutes from your shower each time and save up to 700 gallons each month.

- Take a bath instead and save up to 20 gallons each time.

- Turn the water off while you brush your teeth and save almost 3 gallons of water per day.

- Fixing leaks can save as much as 20 gallons a day.

- When rinsing vegetables, use a pan of clean water instead of running water and save more than 200 gallons per month.

- Don't let the water run when washing dishes.

Snow Plow Markers

Winter is upon us and we need be prepared for the inevitable snow.

The snow plow drivers have asked the Association members to place 3 – 4 foot long sticks or stakes along the edges of the roads to help them see where the edges of the roads are. This not only enables them to tell at a glance where the edge of the road is, but it also keeps them from plowing across the edges of our grass. If we all place a few sticks along our section of the road, it will make it easier for them to plow our roads efficiently and well.

Snowmobilers Beware!

Many lakefront property owners have expressed their concern over snowmobilers on the lake. Not all lakefront property owners remove their docks in the fall and they are afraid that the snowmobilers are not aware of this danger. There were numerous reports last winter of snowmobiles just missing the docks and members are concerned that there could be a tragic accident. Please, if you snowmobile on the lake, pay particular attention to any docks that may be left on the lake all year.

Let's all work together to keep Rush Lake a safe lake.



**“Thick and blue,
tried and true.
Thin and crispy,
way too risky.”**

Remember this rule of thumb about the condition of ice when considering venturing out on the ice. Always remember that ice is never really 100% safe. No matter how thick the ice, there is always some risk to going out on the ice.

Ice Fishing Holes

When ice fishing be sure to make the hole in the ice large enough that you can get a fish out, but not so large as to be a danger to someone. The Michigan Department of Natural Resources recommends anglers make their holes no larger than eight to ten inches, as this size will accommodate most fish species. When done fishing, be sure to mark the hole with a tree branch, sticks, or even chunks of ice to alert others to the presence of a hole.

Scoop That Poop!

Please be sure to clean up after your pets. Pet waste left behind will eventually wash into storm drains, lakes, or rivers without any filtering or cleansing, which can have an adverse effect on water quality.

Boat Launch Keys Will Be Activated

As in the past, boat launch keys are activated when your account is paid in full. Payments are accepted only through the mail or at meetings. It is important that you allow enough time for your payment to be received and posted to your account before your planned need to using the launching facilities..

If you do not have a key but want one, please call the Association hotline. An inactive key will be sent and activated when your account is paid in full.

If you should lose your key, we will provide a replacement for \$15.00. Although these keys are nearly indestructible, if yours should break, return the pieces and we will replace it at no charge.

If you purchased property in the Association this past year and the previous owner left you the key, please include a note to that effect with your payment. We do not automatically activate keys in these circumstances until we are certain the new owner is in possession of this key.

If you have any questions, please contact the Association Clerk at rushlakepoa@yahoo.com or 734-878-0340.



Rush Lake Property Owners Association
P.O. Box 78
Pinckney, Michigan 48169

Annual Dues Statement Inside

Mailing Label

Please Don't Park!

The area at Hillside Park that has been cleared of snow is reserved for parents who are picking up their children from the school bus. Please do not park your vehicles in that area.

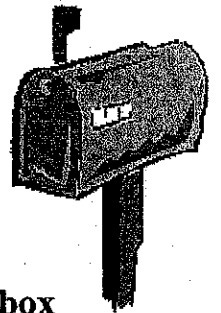


Credit Cards

Please keep in mind that the Association does not have the ability to accept credit cards. Only checks, money orders or cash are acceptable. And payments are only accepted through the mail or at meetings

Be Sure To Keep Your Mailbox

Area Clear!



Just a reminder!
It is the homeowner's responsibility to keep the area in front of their mailbox cleared of snow and ice. During the winter, the roads will be plowed or sanded as needed but each property owner must take care to assure the mail carrier has clear access to their mailbox. Mail delivery will be terminated if the boxes are not kept accessible.